



www.guindastec.com.br
 guindastec@guindastec.com.br
 Tel.: + 55 (11) 4186 9200
 Fax: + 55 (11) 4186 9209



TR-200 MB

DADOS GERAIS

Capacidade do Guindaste 20.000 kg a 3,5 m

Lança 5 seções 8,5 m - 32,1 m

Dimensões Gerais

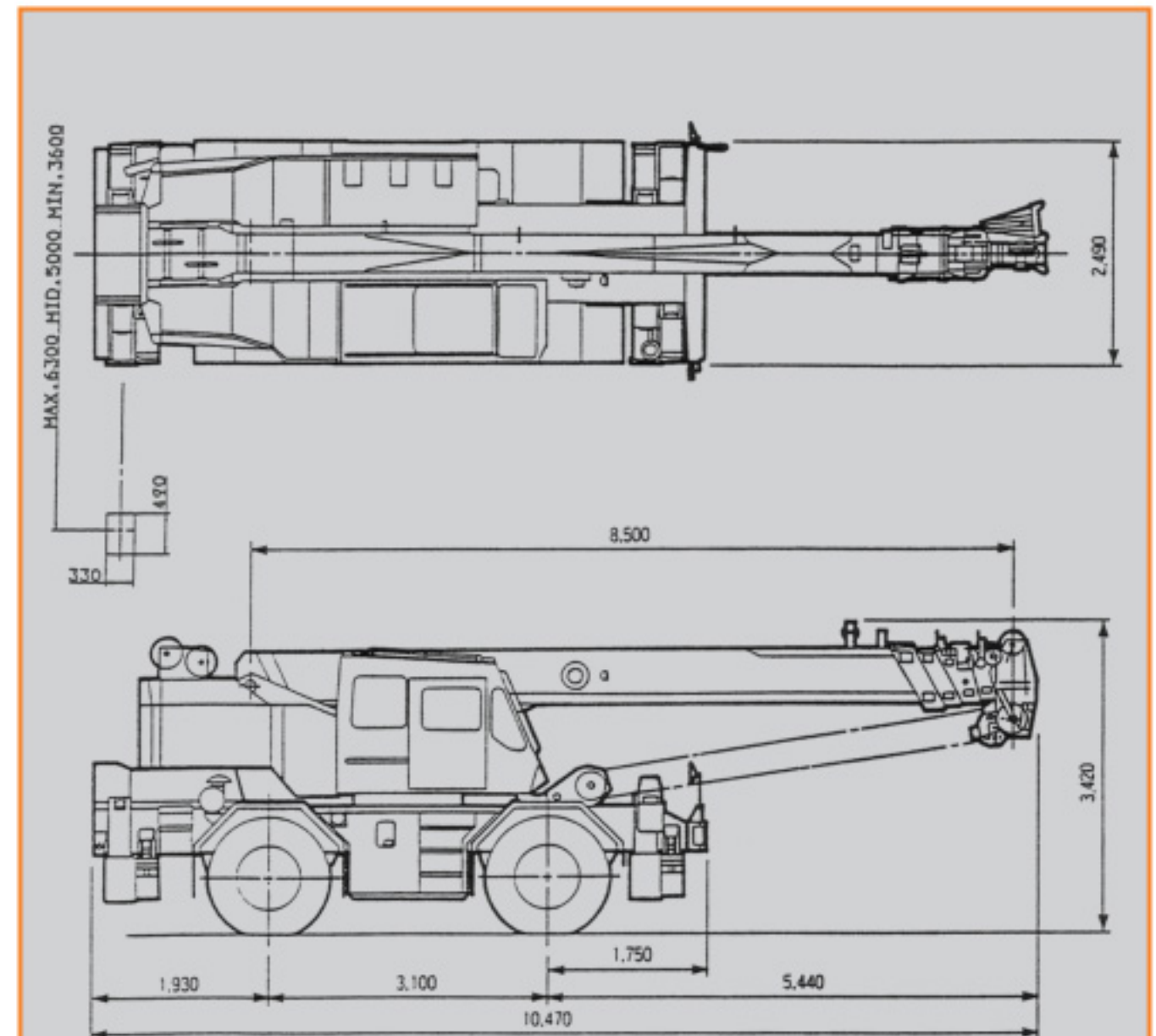
Comprimento total aprox. 10.470 mm
 Largura total aprox. 2.490 mm
 Altura total aprox. 3.420 mm

Pesos

Peso bruto do veículo aprox. 23.200 kg
 No eixo dianteiro aprox. 11.575 kg
 No eixo traseiro aprox. 11.625 kg

Desempenho

Velocidade máxima computada 49 km/h
 Rampa máxima (tan) computada 0,6



Lança	Patolas c/ extensão máx.				Patolas c/ ext. intermed.				Patolas c/ ext. mínima					
	8,5 (m)	14,4 (m)	20,3 (m)	26,2 (m)	8,5 (m)	14,4 (m)	20,3 (m)	26,2 (m)	8,5 (m)	14,4 (m)	20,3 (m)	26,2 (m)		
Raio					Raio				Raio					
2,5m	20,0	12,0	9,0		2,5m	20,0	12,0	9,0	2,5m	20,0	12,0	9,0		
3,0m	20,0	12,0	9,0		3,0m	20,0	12,0	9,0	3,0m	20,0	12,0	9,0		
3,5m	20,0	12,0	9,0	7,0	3,5m	20,0	12,0	9,0	7,0	3,5m	18,9	12,0	9,0	7,0
4,0m	18,5	12,0	9,0	7,0	4,0m	18,5	12,0	9,0	7,0	4,0m	14,2	12,0	9,0	7,0
4,5m	16,5	12,0	9,0	7,0	4,5m	16,5	12,0	9,0	7,0	4,5m	11,3	11,5	9,0	7,0
5,0m	15,0	12,0	9,0	7,0	5,0m	14,5	12,0	9,0	7,0	5,0m	9,3	9,5	9,0	7,0
5,5m	13,7	12,0	9,0	7,0	5,5m	12,0	12,0	9,0	7,0	5,5m	7,9	8,0	8,1	7,0
6,0m	12,5	11,4	9,0	7,0	6,0m	10,1	10,3	9,0	7,0	6,0m	6,8	6,9	6,95	6,95
6,5m	11,5	10,6	8,5	7,0	6,5m	8,7	8,9	8,5	7,0	6,5m	5,9	6,0	6,05	6,05
7,0m	9,9	8,0	6,8		7,0m	7,9	7,85	6,8		7,0m	5,3	5,35	5,35	
8,0m	8,4	7,2	6,15		8,0m	6,15	6,15	6,15		8,0m	4,2	4,25	4,25	
9,0m	6,8	6,4	5,55		9,0m	5,0	5,05	5,05		9,0m	3,4	3,45	3,45	
10,0m	5,8	5,8	5,05		10,0m	4,15	4,2	4,2		10,0m	2,8	2,9	2,85	
11,0m	4,8	4,9	4,65		11,0m	3,5	3,55	3,55		11,0m	2,35	2,4	2,4	
12,0m	4,15	4,2	4,2		12,0m	3,0	3,05	3,05		12,0m	2,0	2,0	2,05	
13,0m		3,65	3,65		13,0m		2,65	2,65		13,0m		1,7	1,7	
14,0m		3,2	3,2		14,0m		2,3	2,3		14,0m		1,4	1,35	
15,0m		2,8	2,8		15,0m		2,0	2,0		15,0m		1,1	1,1	
16,0m		2,5	2,5		16,0m		1,75	1,75		16,0m		0,9	0,9	
17,0m		2,2	2,2		17,0m		1,55	1,4		17,0m		0,75	0,75	
18,0m		2,0	2,0		18,0m		1,35	1,2		18,0m		0,6	0,6	
19,0m			1,75		19,0m			1,0		19,0m			0,45	
20,0m			1,4		20,0m			0,85		20,0m				
22,0m			1,1		22,0m			0,6		22,0m				
24,0m			0,8		24,0m			0,4		24,0m				

